

# +13 More Islands

Greer  
\$499,000

## GREER ISLAND, \$499,000 ACREAGE: 5.1

**S** candal alert! For decades, owner Elizabeth Arey believed she could build her dream home on this small isle off Vinalhaven. After all, Greer Island had been in her family for over a century. But in 2005, the town told her to dream on. Vinalhaven placed Greer Island under “Resource Protection,” prohibiting any development that exceeds 600 square feet or involves plumbing. Most scary for Arey: “The town surveyor thought the island was under three acres and didn’t survey it. Greer is 5.1 acres in size.” Since then, the town hasn’t budged, and the island remains restricted for now. Greer Island still includes a ramshackle shelter near its rocky shoreline. Only 1,000 feet from the shore is Geary’s Beach, a photogenic landing with views of Penobscot Bay and Isle au Haut. “We had a rowboat. We used to go mackerel fishing all the time. We’d catch lobsters and cook them on the shore. [Our kids] had a lot of fun treasure

hunting.” A mere two-minute boat-taxi ride lands you in North Haven.

However deferred her dream, Arey has a knack for gardening with love. She’s transformed this place. “When I married my husband it was barren,” says Arey of the now tree- and wildflower-covered isle. “My husband and I spent the last 40 years planting trees.”

Taxes: \$2,274

## BROWN ISLAND, \$599,000 ACREAGE: 5

In the early years of the 20th century, Dr. Arey Alonzo Butterfield of Boston decided



to divide his wealth between his two sons. Each would be given his own island—all they had to do was head to Maine and pick out their favorite. We don’t know which island the goofy brother stumbled onto, but the smart one fell in love with this small island in the corner of Nicasious Lake.

Current seller Phil Brown bought this forested jewel to escape the press of modernity. The problem was, did he dare to give it a new name? Surrounding Brown Island



Brown  
\$599,000

# Office Space for Sale and Lease



3 Industrial Parkway, Brunswick

21,000 SF Two story building. Accommodates up to 160 workstations. Also includes 9,000 SF structure suitable for storage. 400 + paved parking spaces on site.



5 Industrial Parkway, Brunswick

24,000 SF Former call center. Configuration includes large bullpen, executive offices, conference/training rooms, and break rooms. Furnishings included.

## Attractive Rates, Inquire Today!

Sales | Leasing | Tenancy | Local & National Representation



SVN | The UrbaneK Group  
Commercial Real Estate Advisors  
100 Silver Street | Portland, Maine 04101  
207.613.7400 | [www.theurbaneKgroup.com](http://www.theurbaneKgroup.com)  
All SVN® Offices Independently Owned and Operated.

From airshows, auctions, and new exhibitions to workshops and vintage auto extravaganzas, experience our world-class collection in motion at more than a dozen annual special events. Open 10am to 5pm, year-round. [OWLSHEAD.ORG](http://OWLSHEAD.ORG)

# Ignite your Imagination!

**OWLS HEAD**  
TRANSPORTATION MUSEUM  
117 Museum Street, Owls Head, Maine | (207)594-4418



## OBSESSIONS



Phoebe  
\$339,000

"You're away from the big, stupid boats going by, the planes...everything," Bailey says. "This place is spiritual."

are 22,370 acres of state-protected land, including the elaborate coves and beaches of Nicaous Lake, on whose waters not even jet skis are allowed to make waves. Good riddance, interlopers!

The main house is surrounded by four guest cottages, a free-standing summer kitchen/living room, and a generator cabin. "You have all the creature comforts," says agent John Calannino. The island's

five acres are covered with mature pine and birch trees. "There's a little network of trails, and you can swim almost anywhere off the island." Because while you're luxuriating in all this silence, who's going to stop you?

As for Phil Brown, escape was exactly what his family needed. "We lived in downtown Boston only three blocks from the "Cheers" bar on Beacon Hill," says Brown, a former employee of the Department of

Corrections. "You spend 11 months there, and you need to get the hell out."

Taxes: \$734.

### PHOEBE ISLAND, \$339,000 ACREAGE: 0.11

**I**n the 1930s, no roads reached Sebec Lake. Enter an indefatigable dentist who decided to build a cottage on tiny Phoebe Island, its .11 acres set just 100 feet from the shore. Materials were shipped out on the ice after the lake froze. Eight decades later, the cottage is still standing.

Nowadays, Phoebe is a birdwatcher's paradise. "We watch our eagles' nest with the adults going in and out and the young learning to fly," says seller Jay Bailey. Ospreys, cormorants, and raucous kingfishers do drop in. Because the cottage sits so close to the water, stunning views are right on your doorstep. "You're having your coffee at the table in the morning with the loons swimming by you," says Bailey. "The loons even sound different out here. They have a lonelier cry." All the while, hummingbirds battle for position at feeders outside the cottage.

The cottage has been renovated with an updated interior of polished pine panels and

High  
\$1.675M



## ISLESBORO ISLAND SELECT PROPERTIES

John Oldham, Broker

P.O. Box 300, Islesboro, ME 04848 · (207) 734-8809  
oldhamip@midcoast.com · www.islesboro.com



### FERRY ROAD CAPE, SUNSET WATER VIEW

Well-crafted four year old 3-bedroom, 3-bath home. Convenience, privacy, master bedroom, ensuite, first floor bedrooms and full baths, generous decks. 8 foot ceilings, bamboo flooring throughout, island-cut lumber. Very efficiently and inexpensively heated. Large lot, attractively landscaped and priced. \$335,000.



### OCEANFRONT CEDAR-SHINGLED CAPE

Year-round 2,400 square foot home with three bedrooms, two full baths, refurbished kitchen, dining room atrium doors to shore-side deck. Quaint and cozy wooded location. 1.4 acres and 375 feet of bold shoreline and beach. Great views, near historical society, town tennis, and sailing. \$599,000.



### DOC'S HARBOR PRESTIGIOUS ADDRESS

Superb panoramic sunrise views of East Penobscot Bay. Three-bedroom oceanfront cottage at water's edge with deep water and almost five wooded acres in Pripet. Acreage includes surveyed 3-acre road front lot suitable for development. Just steps to a pleasant sandy beach and a short sail to Castine. Idyllic! \$395,000.



**WONDERFUL THREE-BEDROOM FAMILY HOME, ALMOST 30 ACRES** of gardens, orchards, meadows, and woods conveniently near the heart of Islesboro activities but privately sited. Beautiful open concept floor plan, living space, hearth, hardwood and tiled floors and tiered decks. Magnificent mature pines welcome you. \$375,000.



**SPECTACULAR PENDLETON POINT OCEANFRONT HOME** Prime Dark Harbor shorefront location for this two-bedroom plus, two full bath year round residence. Breathtaking westerly views and sunsets from almost every room. Cathedral ceilinged living room with exposed beams and large fanlight windows. Meticulous attention to detail. 420 feet of beach and ledge on 4.2 acres edged with evergreens. Long circular drive and grassy meadow enrich this special setting. \$965,000.



**MEADOW POND MUST SEE!** 1850's Greek Revival completely renovated 1992, historic detail preserved. 4.5 acres on pond. Sweeping views, lovingly landscaped meadow. Kitchen, living room, two bedrooms, two full baths, maple & ash flooring, recessed lighting, skylights, easy to heat, large septic for expansion. Two detached guest studios, green house, wired tool shed. Large sunny garden spots, seasonal stream and varied hard and soft woods. Interior just painted. A real gem! \$265,000.



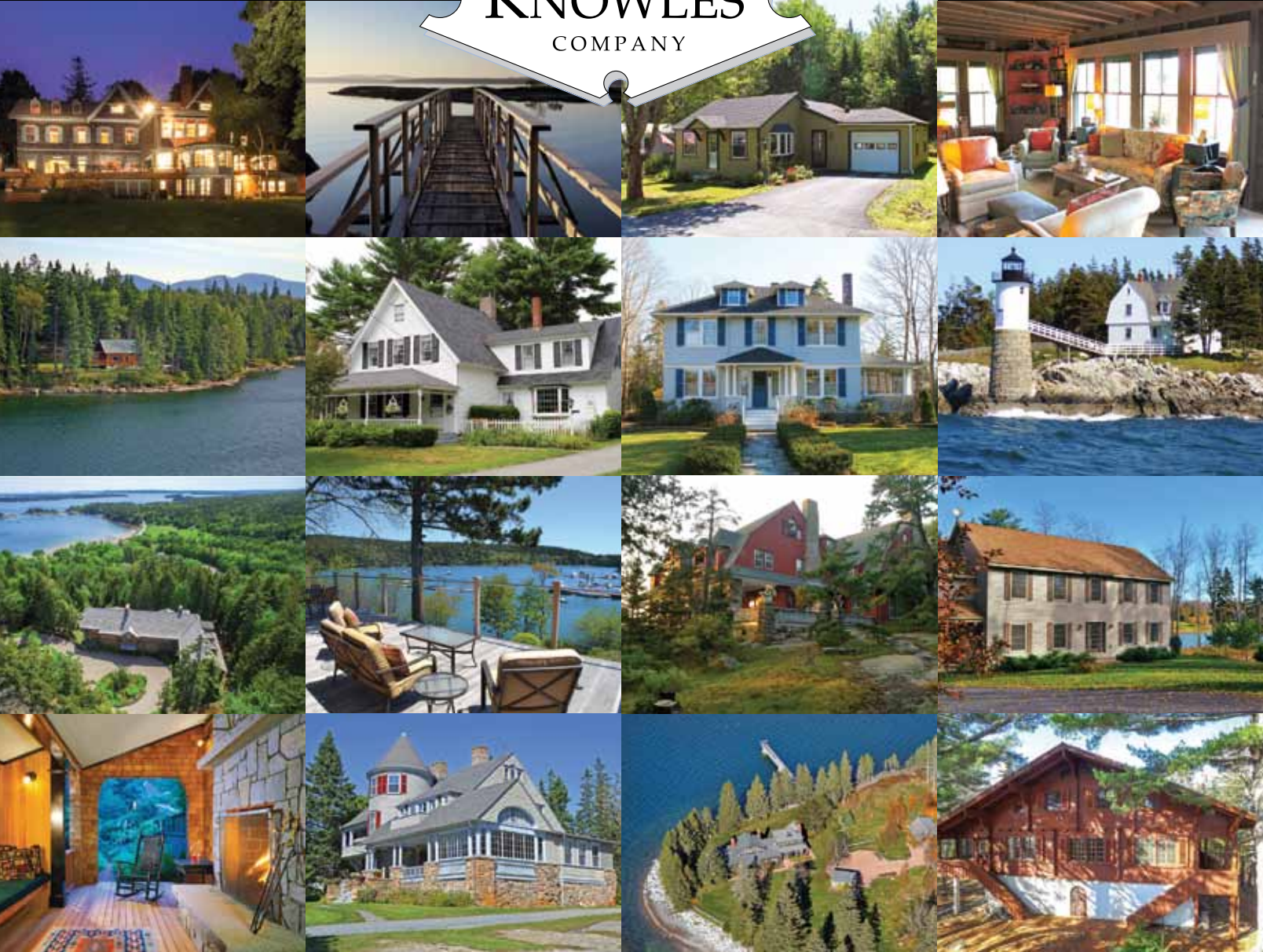
### PENDLETON POINT ROAD CIRCA 1905

Four bedroom home near Dark Harbor village off the road, lush 1.8 acre lot. Hard pine floored dining room, eat-in kitchen, bay window sunroom, living room. Master bedroom, guest bedroom, two and half baths, and two sky-lit garret bedrooms. Breakfast deck, private back yard and cabin office or bunk room amidst delightfully mixed mature hard and soft woods. \$265,000.



**DARK HARBOR SHINGLE STYLE** Prestigious address, whimsical design, multiple use workshop renovation to residence. Innovative use of antique fixtures. Living room and conservatory, kitchen, shop, master bedroom and bath. Front gallery space and garage. Attached one-bedroom apartment. \$165,000.

*Real estate sales and vacation rentals since 1898*



### **Real Estate**

Integrity and unsurpassed attention to our clients' needs  
Dedicated professionalism and keen sense of the market  
Part of the MDI community since 1898

*Distinctive properties.  
Legendary service.*

### **Vacation Rentals**

Over 100 years of rental experience  
Personalized service, local expertise  
Our agents handle all the details so you can relax

*Lakefront camps, downtown apartments, rural cottages,  
oceanfront luxury estates...we have it all*

For all your real estate needs on Mount Desert Island and the Downeast Maine coast.  
Also offering more than 400 vacation rentals near Acadia National Park.

1 Summit Road  
Northeast Harbor, ME  
207-276-3322 | info@KnowlesCo.com  
**www.KnowlesCo.com**

White  
\$1.675M



rustic wooden furniture. Phoebe Island sits only a hundred feet from the shore, with two acres of shoreline and a utility boat for loading and transportation included in the sale. Bangor International Airport is an easy hour's drive away. Thirsty for beauty? Sebec Lake sits directly south of Mt. Katahdin and the Hundred-Mile Wilderness.

"You're away from everybody," Bailey says. "You're away from the big, stupid boats going by, the planes...everything," he says. "This place is spiritual."

Taxes: \$850.

**HIGH ISLAND, \$1.675M**  
**ACREAGE: 26**

According to Charles McLane's *Islands of the Mid-Maine Coast*, the first recorded deed for High Island was conveyed for just \$65 back in 1805. Factoring in inflation, that's a 1300-percent increase in value.

Between then and now, 26-acre High Island (one of the Muscle Ridge Islands off Spruce Head) underwent extensive quarrying in the early 20th century. Two large



boarding houses hosted hundreds of quarrymen, among them many Italian immigrants. Conditions were poor. Food often consisted of "hard-boiled eggs like golf balls or doughnuts that would make good links for a stone chain." To make matters worse, "local liquor laws led to periodic raids by the county sheriff and the confiscation of the red wine necessary to the morale of the luckless Italians." The pink granite from the quarries made it all the way to Philadelphia, where it was used to make bridge seats for the Pennsylvania Railroad.

The boarding houses are long gone, but the steep ledges of the quarry, the stone foundations, and the beautiful granite

wharves (built for loading the stones) survive to this day. Among the spruce woods and heirloom apple trees are several new building sites, meaning the next chapter in this island's history is still to be written.

Taxes: \$1,914.

**WHITE ISLAND, \$1,675,000**  
**ACREAGE: 61**

Sailing enthusiasts, set your course for White Island. "We're surrounded by a lot of very interesting boats," current owner Bill Boyd says. And they're drawn here for a reason. Brooklin's Wooden Boat School and the renowned Brooklin Boat Yard sit just a short ride across Eggemoggin Reach, a stretch of water that the

COURTESY OF THE RESPECTIVE AGENT/OWNER/SELLER

## OBSESSIONS



Boat Yard calls “the best cruising grounds on the coast of Maine.”

Once you’ve tied up at the island’s deep-water dock, turn your gaze inland toward a sweep of granite bluffs and sandy beaches surrounding sixty acres of forests, fields, and freshwater springs. On a clear day, your seaward view extends all the way to the rolling greenery of Acadia National Park. A cozy A-frame cottage and guest house provide three-season shelter on the northernmost point of the isle.

And who says island life is isolating?



**Norton**  
**\$1.5M**

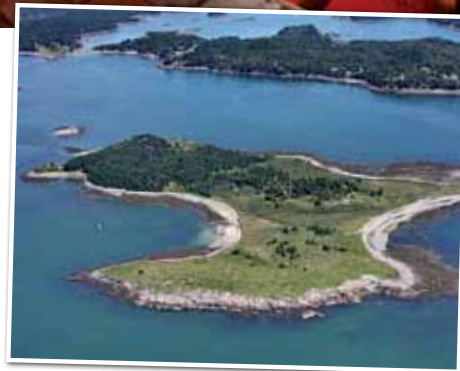
“The neighborhood is really exceptional,” says Boyd. “We know people on almost all the islands out here.”

Taxes: \$4,690

**NORTON ISLAND, \$1,500,000**  
**ACREAGE: 60**

If you’re hoping to expend no more effort than unpacking your bags, Norton Island

*(Continued on page 250)*



COURTESY PHOTOS



**Cruise Beautiful Casco Bay  
on our Double Deck Harbor Cruiser  
hosting up to 149 guests**

Well stocked bar accepting cash or credit

Catering available

Concert Cruises open to the public

Private Charters available for ceremonies, receptions, company outings, rehearsal dinners

Custom House Wharf  
207-774-7220 • casablancamaine.com



Home Of The  
Twin Lobster  
Dinner Special

**Portland’s Largest Waterfront Deck**  
**Live Entertainment ALL Summer**

Fresh Seafood • Available for Private Events

Custom House Wharf  
portholemaine.com • 207-773-4653



*Inn at Diamond Cove*

GREAT DIAMOND ISLAND • PORTLAND, MAINE

a mile away...

PROUD PARTNER  
PROPERTIES OF



PORTLAND  
HARBOR HOTEL

PORTLANDHARBORHOTEL.COM  
DIAMONSEDGERESTAURANTANDMARINA.COM  
INNATDIAMONDCOVE.COM

a world apart.



**DIAMOND'S EDGE**

RESTAURANT & MARINA

*on great diamond island, maine*

LOBSTER BAKES, WEDDINGS,  
& SPECIAL EVENTS



## OBSESSIONS

*Dream Islands* (continued from page 104)

is your gateway to stress-free island living. The 3,000-square-foot self-sufficient residence was built only 10 years ago, meaning it's probably younger than those jars in the back of your fridge. A vast stone fireplace and solarium will ensure you stay warm during the Maine winters. Solar panels and a complete septic system and a freshwater well service the property. A few yards away, hidden from sight by a row of fir trees, is a cozy guest house with sleeping loft and an ocean-facing deck. The surrounding woodlands give way to lush meadows, scattered blueberry and cranberry bushes, and sandy beaches totaling 55 acres, plus an additional five acres on the South Addison shore that comes complete with boathouse.

Taxes: \$15,634

### LOWER BIRCH ISLANDS, \$1,295,000 ACREAGE: 28

Here's a pretty pair of islands: 23.6 acres and 4.4 acres connected by a tidal land bridge. Included in the price is 3 acres on the mainland, where you can park your



gas guzzler.

Think you're tough enough to live out here? Before current owner Stephen Broyhill bought these islands, the previous couple who lived here lasted only one night under the stars before leaving and putting the property up for sale in the 1980s. *Maine: Not Exactly For Everyone.*

Had they stayed longer, they might have seen deer who occasionally swim out to sneak a night bite of the apples ripening in the orchards. "You're truly out in nature. It's quiet and undisturbed," Broyhill says.

An elegant post-and-beam home crowns the hill on the bigger island. A



wraparound deck overlooks a meadow leading down to the shoreline. All new furniture complements a stone fireplace and hardwood floors. Utilities are fed by an updated solar system and a drilled well.

"For anybody who likes to be in nature or is creative, it's just ideal," says Broyhill. He drops his voice confidentially. "I get tired of being around people. What I like is being able to get totally away."

Taxes: \$8,898

### PINE ISLAND, \$550,000 ACREAGE: 1

Just an hour from Portland, on Long Lake in Naples, Pine Island is so lovely you sometimes have to repel explorers. "One

COURTESY OF THE RESPECTIVE AGENT/OWNER/SELLER

**LANDMARK REALTY**  
 Navigating the Way for You.

**OCEAN SPRAY RD**  
**PEAKS ISLAND, ME**  
**MLS# 1263785**

**MARK SMALL**  
 PH. 207.807.7889  
 MARK@LANDMARKREALTYMAINE.COM

LANDMARKREALTYMAINE.COM



**Pine**  
\$550,000



Fourth of July, I came face to face with a boatful of would-be island partiers,” says seller Jay Bailey. “There were about 25 people on it, all hanging off the sides. When they saw that we were there, they anchored off the island instead and partied there all day.” Since then, “I make sure to go back every year.”

What Bailey values most is that “it’s

very heavily treed—it’s like a park.” The tall pines rocketing up from this one-acre getaway were once highly prized by shipbuilders, giving names to both the island and its locale: Mast Cove. “Ancient sunken masts are still visible on the island’s shores,” Bailey says. Mingling with the pines are swathes of wild blueberry

bushes surrounding—what else?—a “Hansel and Gretel” cottage with sleeping loft. Off the back, a small sheltered beach is a great place for swimmers. Maybe you’d like to hang out here too.

Tax: \$5,325.16



**Wahl's**  
\$250,000

**WAHL'S ISLAND, \$250,000**  
**ACREAGE: 41**

Once upon a time, passage onto Wahl's Island required the equivalent of a secret knock. “We used to drive to the boat landing and beep our horn three times,” says owner Kathy Noddin, whose family has owned the island for 80 years. “And then our grandfa-

• MAINE • MADE • FURNITURE •



• 207-645-3602 • WWW.MAINEMADEFURNITURE.COM • 128 WELD ROAD WILTON, ME 04294 •

## OBSESSIONS

ther would come out and get us.”

“It used to be a sheep farm in the 19th century,” says agent John Lawrence of this 40-acre island that lies at the confluence of the St. Croix River and Grand Flow Lake. The island hasn’t made leaps in development since its agricultural past, so the camp will need renovations. But for the adventurous, Wahl’s Island is a pristine pocket of Maine only 10 miles from the historic border town of Calais and the Canadian frontier.

Taxes: \$951

### CAMPBELL ISLAND, \$245,000

**ACREAGE: 90**

**C**ampbell Island may be the bargain of the bunch. For less than \$250K, you get 90 acres of preserved wilderness ringed by 9,800 feet of ocean frontage. The island is under a conservation easement that allows for a 400-square-foot shelter, and existing campgrounds can currently accommodate up to eight visitors. Around the island, opportunities for hiking, camping, kayaking, and bird-watching



are almost limitless. Nearby, the quiet town of Brooklin offers an escape from seclusion with establishments like Brooklin Candy, Mad Mama’s Paint ‘n Sip, and Flye Point Sculpture Garden & Art Gallery. As with most good deals, there’s a catch. The easement requires that the island must be kept open for public access, so your paradise will

have to be shared with visitors.

Taxes: \$280

### SAND ISLAND \$1,900,000

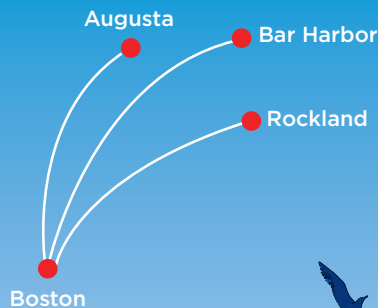
**ACREAGE: 1.5**

A Caribbean quay just half an hour from Portland might sound like fantasy, but Sand Island, located in Casco Bay east of Chebeague Island, comes close. The island is ringed by sandy beaches with deep-water anchorage for boat owners. There are no buildings on the island other than a basic “Bomba’s Shack,” but the sunny beaches provide an ideal vantage point for ad-

COURTESY OF THE RESPECTIVE AGENT/OWNER/SELLER

# Enjoy the ride to Maine.

Start your vacation sooner with fast flights and easy connections through Boston. Affordable fares. No traffic. Just easy.



capeair.com 800-CAPE-AIR

Fly into Hancock County-Bar Harbor, Knox County and Augusta State Airports.

# TIMELESS CRAFTSMANSHIP. OLD WORLD CHARM.



## TAKE YOUR HOME from ORDINARY TO EXTRAORDINARY

Carriage House doors are meticulously handcrafted to your specifications and are made from the finest materials, ensuring long-lasting beauty, reliable performance, and low maintenance. Our Carriage House doors complement the architecture of older homes as well as newly designed residences.

[www.DSIdoors.com](http://www.DSIdoors.com)



DOOR **DSI**  
SERVICES, INC.

31 Diamond Street, Portland  
(207) 797-5696  
(800) 540-5696

## Summer Events

Fourth of July  
Celebration

•  
Bastille Day  
Celebration

•  
Plein Air Festival

•  
Castine Classic  
Yacht Race

•  
Fort George  
Fortification



[VisitCastine.com](http://VisitCastine.com)

## CASTINE MAINE

Under The Elms  
And By The Sea



Lisa Burton Photo

Castine Inn • [castineinn.com](http://castineinn.com) MarKel's Bakehouse • [markelsbakehouse.com](http://markelsbakehouse.com)

Castine Merchants/Promotions Committee • [VisitCastine.com](http://VisitCastine.com) Pentagoet Inn • [pentagoet.com](http://pentagoet.com)



*Providing In-Home Childcare  
to Maine Families since 1985*

- Full Time/Part Time Nannies
- Hotel Babysitters
- Emergency/On-Call Services
- Babysitting List Subscription
- Temporary Nannies
- Newborn Nannies



*All of our nannies and sitters have been through  
our extensive application and screening process.*

**207.799.0200**



**www.portlandnannies.com**

## OBSESSIONS



**Sand**  
\$1.9M

mingering passing yachts and the views of surrounding islands. Jeff England, owner of Sand Island for more than 25 years, believes wholeheartedly in his island's uniqueness. "If Casco Bay is the oyster, then Sand Island is the one and only natural pearl." At this price, he'd better hope buyers agree.

*Taxes: \$200*

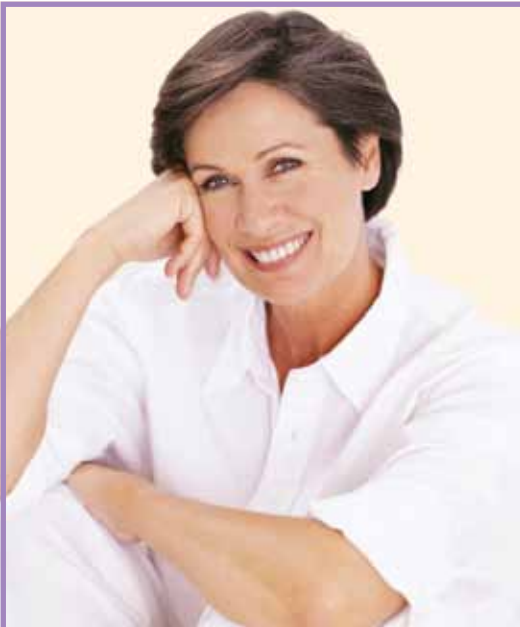


**Bare**  
\$2.8M

**BARE ISLAND, \$2,800,000  
ACREAGE: 77**

**D**on't let the name fool you--Bare Island is a hidden treasure. Located in Machiasport, Bare is one of the last harbor islands to retain all development and mineral rights, meaning you have total freedom to create your own paradise on its shores. There's already a seasonal four-bedroom, two-bath cottage tucked away on the sheltered western cove, plus 77 acres of forest and shoreline for you to play with. The island is just a ten-minute boat ride from the town of Machiasport, though the

COURTESY OF THE RESPECTIVE AGENT/OWNER/SELLER



**Radiant Impressions**

Artfully sculpted and custom designed, Radiant Impressions offers beautiful prosthetic breast and nipple options after mastectomy, lumpectomy or reconstructive breast surgery.

Restore confidence with your personalized Radiant Impressions custom prosthesis.

Call today to schedule a consultation.

We will bill Medicare and Most Insurance

Open 10 am - 4 pm Mon. - Fri.  
1189 Congress St. • Portland ME  
For best service call for an appointment  
**(207) 775-4048 / (888) 599-6626**  
745 Central Ave., Dover, NH 03820  
**(603) 749-4602**  
www.aspeciaplaceinc.us



The source for Chemotherapy &  
PostMastectomy Essentials. Swimsuits,  
Sports Bras, Tank Tops, Wigs & Turbans.





most dramatic arrival would certainly be by means of the bayside northeastern cove, which stays deep right up to the shore—perfect for a sea plane.

Taxes: \$5,362



**FISHERMAN ISLAND, \$599,000**

**ACREAGE: 50**

This island is flat and open, sprouting only a few trees and patches of scrub within its 50-acre spread where scattered meadows provide 360-degree views of both sea and mountains. While some might bemoan the lack of greenery, the island could be a blank slate for the right owner hoping to develop a family complex or even a private runway. Nearby, you'll find Great Wass Island Preserve and the fishing town of Jonesport. But if you're planning to visit, we suggest bringing along a book or two.

Taxes: \$4,413 ■

OUR CITY... ...YOUR WAY!

SUBSCRIBE TO  
**PORTLAND**<sup>TM</sup>  
New England's North Star

(207) 775-4339 • portlandmagazine.com



**FREE**

**BOTTOM UP/ TOP DOWN**

On Graber Cellular, Pleated, Natural, or Fabric Shades  
Upgrade to the best combination of privacy and natural light.\*

**VALID JUNE 1 – JULY 31, 2017**

*Accent on Windows*

**CUSTOM WINDOW TREATMENTS**

Call us at 207-772-1088  
470 Forest Avenue, Portland, Me. 04101  
[www.ACCENTONWINDOWS.net](http://www.ACCENTONWINDOWS.net)